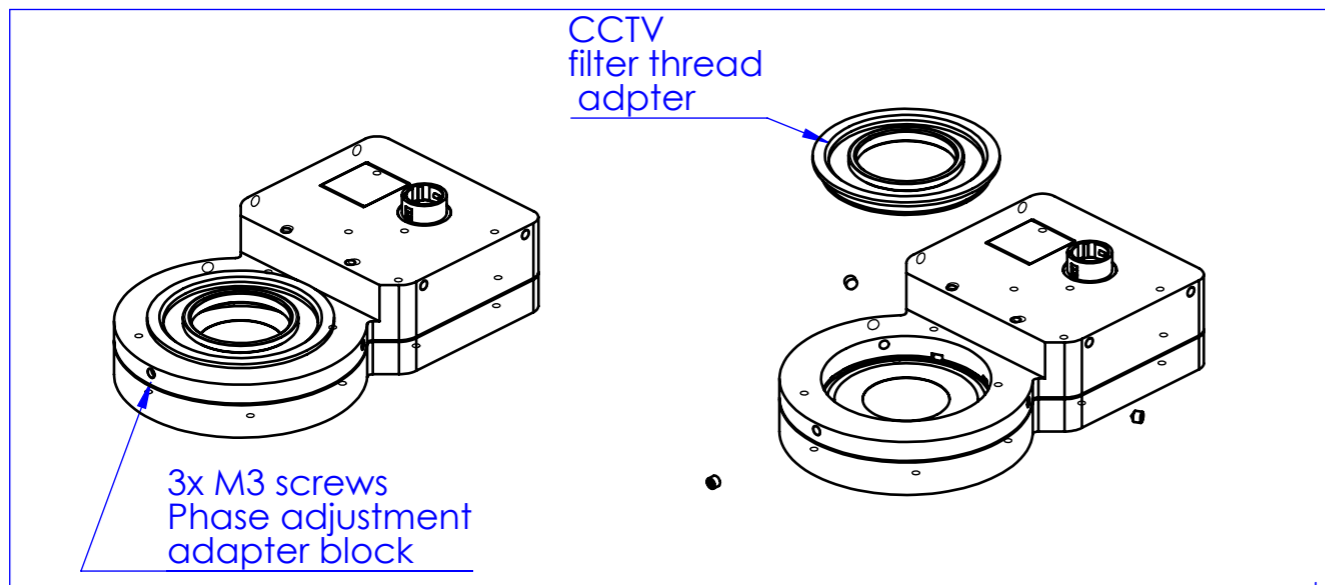


Ⓜ M3 Ⓡ 6 clamping holes



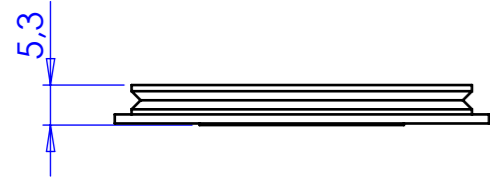
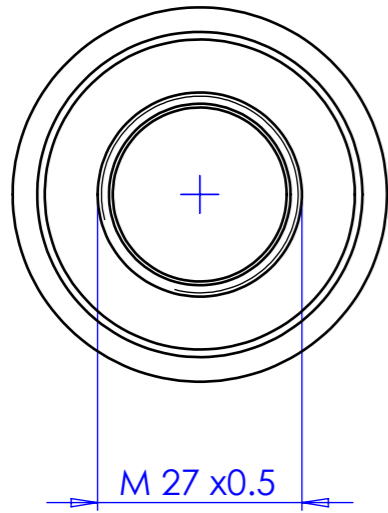
Material		N.A.		Mass		191 g		Scale		1:2	
Surface treatment		N.A.		Part No.		CO26434					
Geometrical tolerance (ISO 2768-2)				Class	K	Undimensioned bevels		0,5x45°			
Linear tolerance (ISO 2768-2)				Class	m	Undimensioned radii		R 0,5			
0,5 ±3	>3± 6	>6± 30	>30± 120	>120 ±400	>400± 1000	>1000 ±2000	>2000 ±4000	Description		AO Lens	
±0,1	±0,1	±0,2	±0,3	±0,5	±0,8	±1,2	±2	Drawing No.		DP 26434-B	
<p>OPTO ENGINEERING S.r.l. - Mantova Italy - Tel. +39 0376 699111 - www.opto-engineering.com</p>		Date		Name		Drawing No.		Sheet		1/2	
		Designed		Rodella		DP 26434-B					
		Drawn		14/12/2017		Santini					
Checked								<i>Secret and confidential - All rights reserved - No copy, dissemination or circulation is allowed unless specifically authorized in writing by OPTO ENGINEERING S.r.l. - Any violation shall be legally prosecuted.</i>			

all dimensions are in mm

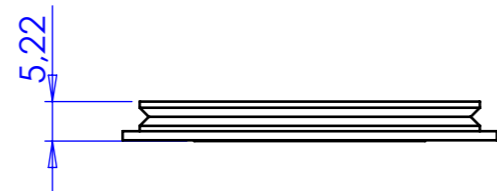
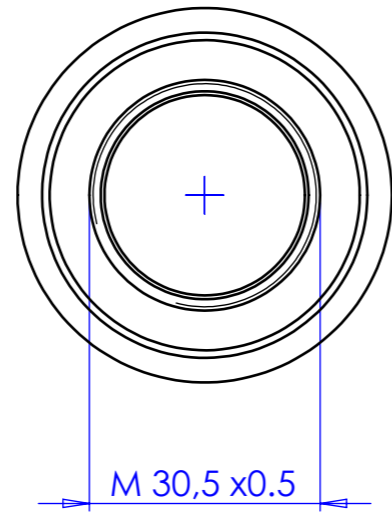
MECHANICAL ADAPTORS

Rev No.	Description	Date	Name
B	APP	07/05/2018	Rodella

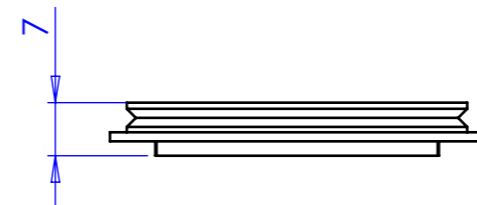
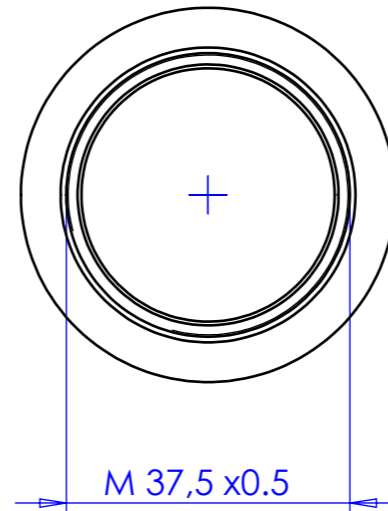
AOLM27X05AR



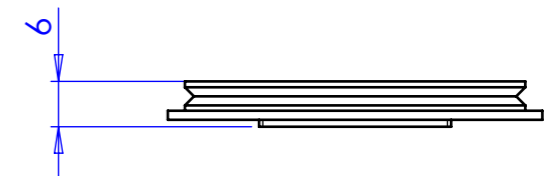
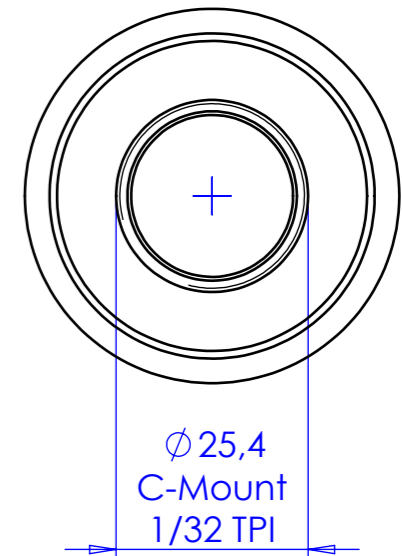
AOLM305X05AR



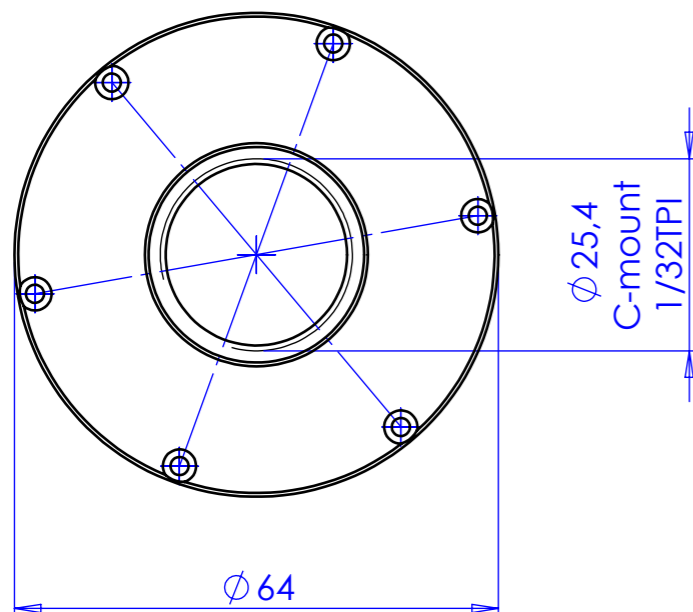
AOLM375X05AR



AOLCM



AOLCF



Material Aluminium - UNI-EN 573 EN AW 6082		Mass 8 g		Scale 1:1	
Surface treatment Black Hard Anodizing		Part No. CO26431		Description Adattatore Comp	
Geometrical tolerance (ISO 2768-2)		Class		K	
Linear tolerance (ISO 2768-2)		Class		m	
0.5 ±3	>3÷ 6	>6÷ 30	>30÷ 120	>120 ±400	>400± 1000
±0.1	±0.1	±0.2	±0.3	±0.5	±0.8
				±1.2	
				±2	
				±4000	
				±2	
				R 0.5	
				0.5x45°	
		Date		Name	
		Designed		Rodella	
		Drawn		14/12/2017	
		Checked		Santini	
		Drawing No.		Sheet	
		DP 26431 -B		2/2	
Secret and confidential - All rights reserved - No copy, dissemination or circulation is allowed unless specifically authorized in writing by OPTO ENGINEERING S.r.l. - Any violation shall be legally prosecuted.					

all dimensions are in mm